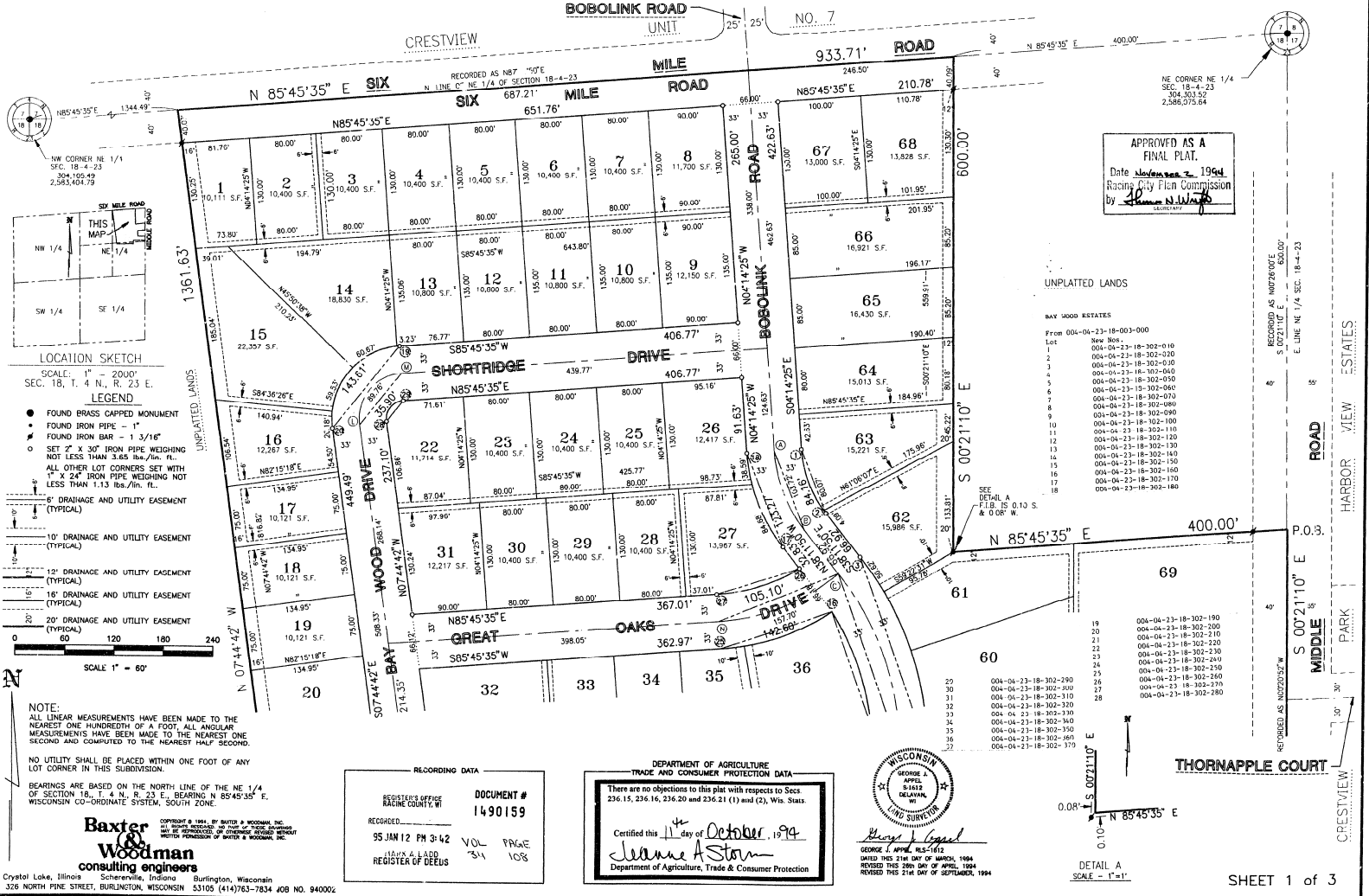


BAY WOOD ESTATES

BEING A SUBDIVISION OF PART OF THE NORTHEAST 1/4 AND THE SOUTHEAST 1/4 OF THE NORTHEAST 1/4 OF SECTION 18, TOWN 4 NORTH, RANGE 23 EAST OF THE FOURTH PRINCIPAL MERIDIAN, TOWN OF CALEDONIA, COUNTY OF RACINE, STATE OF WISCONSIN.



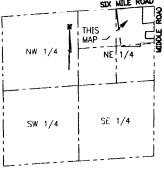
BAY WOOD ESTATES

BEING A SUBDIVISION OF PART OF THE NORTHEAST 1/4 AND THE SOUTHEAST 1/4 OF THE NORTHEAST 1/4 OF SECTION 18, TOWN 4 NORTH, RANGE 23 EAST OF THE FOURTH PRINCIPAL MERIDIAN, TOWN OF CALEDONIA, COUNTY OF PACINE, STATE OF WISCONSIN.

APPROVED AS A FINAL PLAT.
 Date Wisconsin 2, 1994
 Recording Fee Commission
 by James N. White

WISCONSIN
 State of Wisconsin
 George J. Woodman, R.L.S. 1812
 Surveyor
 DATED THIS 21st DAY OF APRIL, 1994
 REVISED THIS 20th DAY OF APRIL, 1994
 REVISED THIS 21st DAY OF SEPTEMBER, 1994

LOCATION SKETCH
 SCALE: 1" = 2000'
 SEC. 18, T. 4 N., R. 23 E.



- LEGEND**
- FOUND BRASS CAPPED MONUMENT
 - FOUND IRON PIPE - 1"
 - FOUND IRON PIPE - 1 3/16"
 - SET 2" X 30" IRON PIPE WEIGHING NOT LESS THAN 3.55 lbs./lin. ft.
 - ALL OTHER LOT CORNERS SET WITH 1" X 24" IRON PIPE WEIGHING NOT LESS THAN 1.13 lbs./lin. ft.
 - 6" DRAINAGE AND UTILITY EASEMENT (TYPICAL)
 - 10" DRAINAGE AND UTILITY EASEMENT (TYPICAL)
 - 12" DRAINAGE AND UTILITY EASEMENT (TYPICAL)
 - 16" DRAINAGE AND UTILITY EASEMENT (TYPICAL)
 - 20" DRAINAGE AND UTILITY EASEMENT (TYPICAL)
- SCALE 1" = 60'

NOTE:
 ALL LINEAR MEASUREMENTS HAVE BEEN MADE TO THE NEAREST ONE HUNDREDTH OF A FOOT. ALL ANGULAR MEASUREMENTS HAVE BEEN MADE TO THE NEAREST ONE SECOND AND COMPUTED TO THE NEAREST HALF SECOND.
 NO UTILITY SHALL BE PLACED WITHIN ONE FOOT OF ANY LOT CORNER IN THIS SUBDIVISION.
 BEARINGS ARE BASED ON THE NORTH LINE OF THE NE 1/4 OF SECTION 18, T. 4 N., R. 23 E., BEARING N 85°45'35" E, WISCONSIN CO-ORDINATE SYSTEM, SOUTH ZONE.

RECORDING DATA
 VOL. PAGE
 34 109

DEPARTMENT OF AGRICULTURE, TRADE AND CONSUMER PROTECTION DATA
 There are no objections to this plat with respects to Secs. 236.15, 236.16, 236.20 and 236.21 (1) and (2), Wis. State.
 Certified this 11th day of October, 1994
 James A. Shaw
 Department of Agriculture, Trade & Consumer Protection

Baxter & Woodman consulting engineers
 Crystal Lake, Illinois Schererville, Indiana Burlington, Wisconsin
 326 NORTH PINE STREET, BURLINGTON, WISCONSIN 53105 (414)743-7834 JOB NO. 940002

