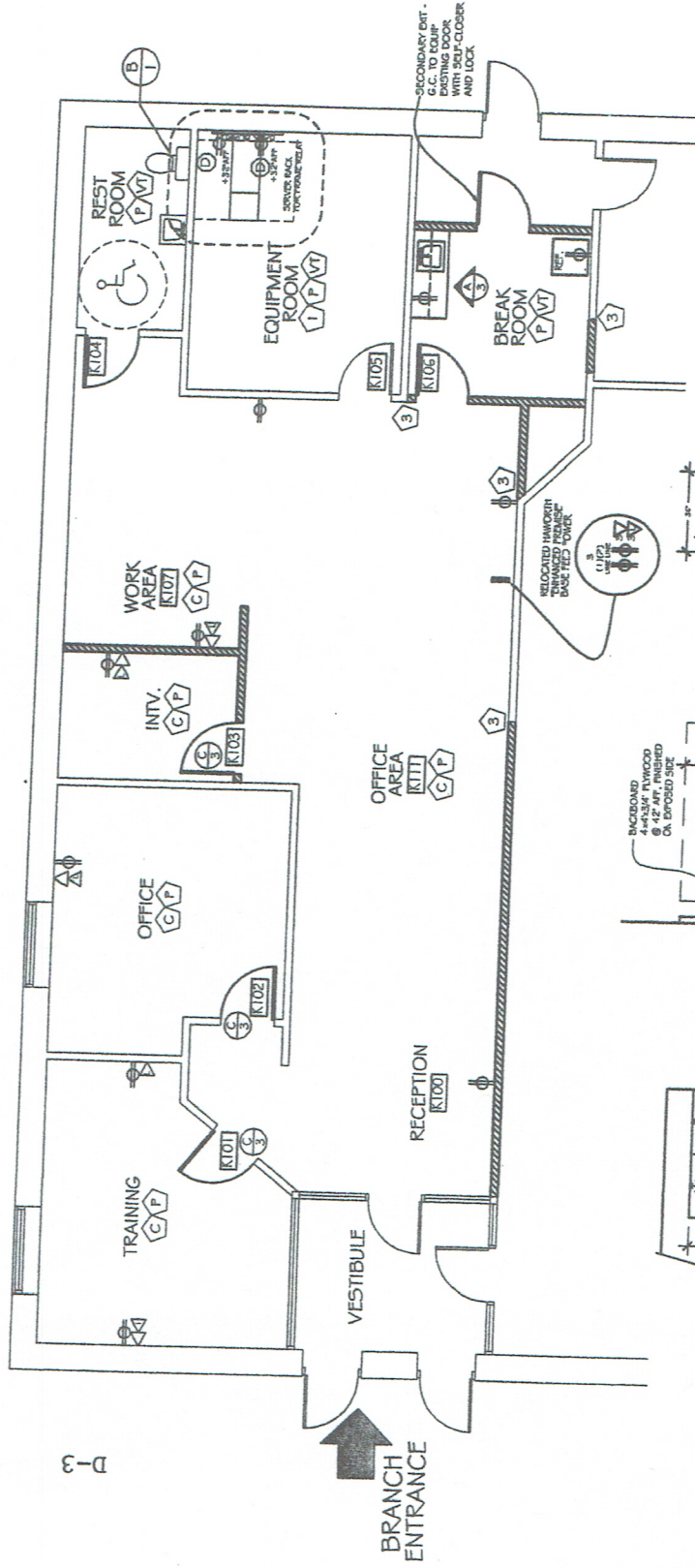
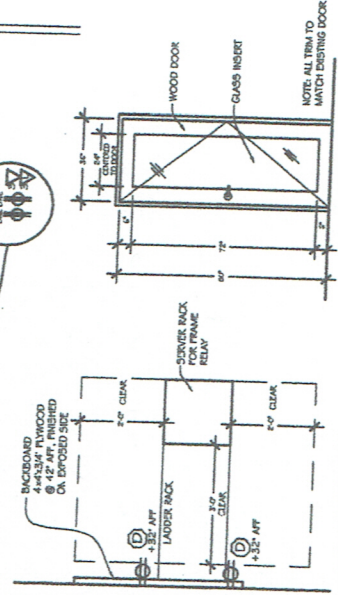


BRANCH #	RACINE	5651
CITY	RACINE	WI
BUILDING ADDRESS	6800 WASHINGTON AVE.	
APPROVED BY:	DATE:	
REVISION	DATE	
RENTABLE SQ. FT.:	1,883	
USABLE SQ. FT.:	1,083	
PROJECT TYPE:	RELOCATION	
LOCATION:	5651	
FILE NAME:	6482 Reloc_31oct12	
DATE DRAWN:	1/17/2012	
DRAWN BY:	MAT	
CHECKED BY:	D.D.	
SCALE:	N.T.S.	
PAGE:	3	OF 5



CONSTRUCTION / ELECTRICAL PLAN

BR 6482 RACINE
FIRST FLOOR RETAIL SPACE
6800 WASHINGTON AVE.
RACINE, WI
USF - 1,883, RSF - 1,883
PROJECT MANAGER FOR THIS PROJECT:
DIONNE ZARATIAN - FACILITIES ANALYST
PHONE: 246-244-4162
FAX: 246-244-5844



(A) CABINET ELEVATION - BREAK ROOM
NOT TO SCALE

(B) SERVER RACK DETAIL
NOT TO SCALE

(C) DOOR DETAIL
NOT TO SCALE

**GENERAL CONTRACTORS ARE TO FIELD VERIFY ALL EXISTING CONDITIONS, INCLUDING ADA OR LIFE SAFETY CODE ISSUES BEFORE SUBMITTING CONSTRUCTION BIDS. IF ANY SUCH VIOLATIONS EXIST, KELLY SERVICES MUST BE NOTIFIED.

D-3